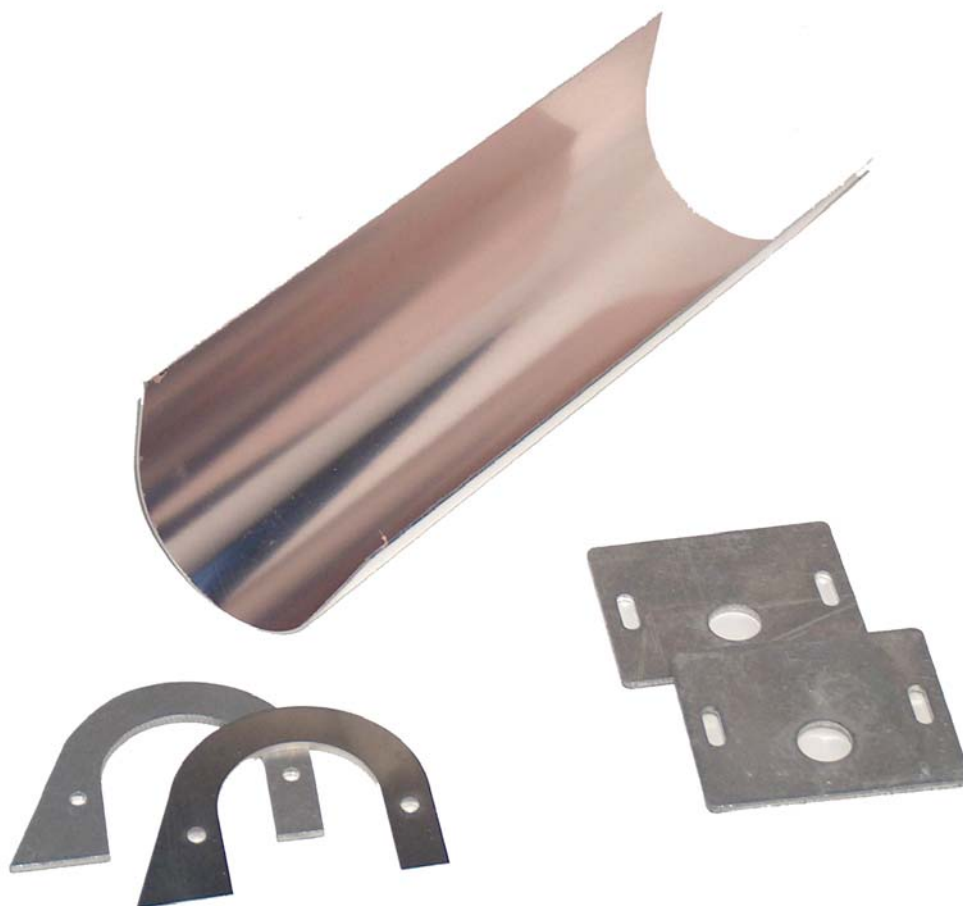


***Refitting Kit
for
Gallus R-160 / T-180 / R-250 Reflector units***



1 Components for Reflector Unit

- 1 U-shaped Reflector sheet L=246 mm (for R-160) and L=345 mm (for R-250) respectively
- 2 U-shaped Reflector mount
- 2 rectangular Lampholders
- 8 screws DIN 84-M4x12-A2
- 8 spring rings DIN 127-M4-A2
- 2 circlips for 15 or 16mm shaft (DIN 471 15x1-A2)

Option (included an increase of power):

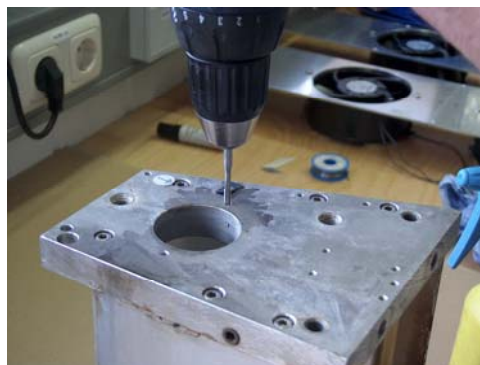
- Choke 400/150 N2
- Ignition ZRM 12 ES
400

2 Refitting

- 1) The four existing M4 tap holes for the old lamp holder has to be extended to the inside of the housing (use a 3,2 mm drill with lubricant to prevent screw thread from damage)



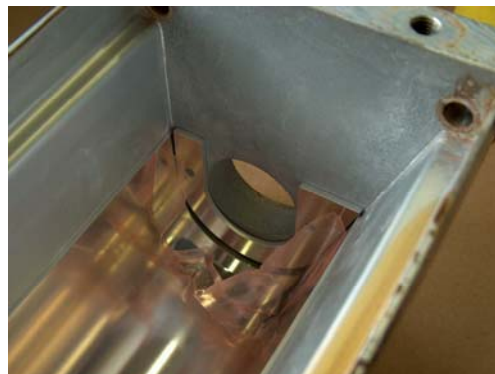
- 2) Tap the M4-thread from the outside to the inside (use lubricant). Because of the thickness of the end plate a long screw tap is necessary. Please make sure the possibility to use the tap from the inside.



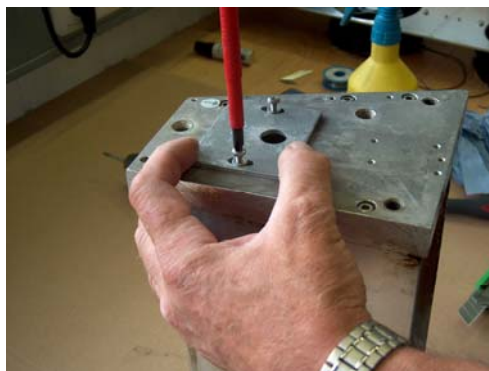
- 3) Put the reflector sheets inside corresponding to the design of the reflector. Remove the protection film at both ends to ensure that the film will not be clamped.



- 4) Put the reflector holder inside. Please press it strongly into the rounding of the reflector and fix them with M4x12 screws from the inside.



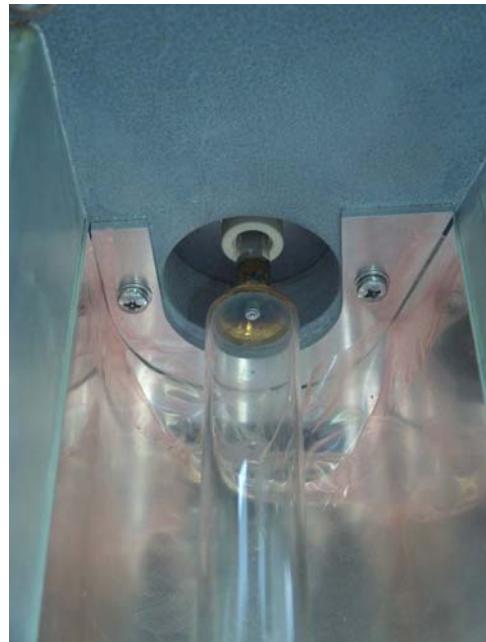
- 5) Mount the posterior Lamp holder in such a way that the big hole (diameter 17 mm) will be closer to the radiation aperture of the reflector unit (print substrate) so that the lamp can be mounted closer to the print substrate.



- 6) Fix the circlips approximately in the middle of the thicker parts of both lamp-caps.



- 7) Install of the lamp: Thread the lamp-cable through the posterior holder and shift the lamp through the hole of the lamp holder till the circlips get in contact with holder. Put off fore side lamp holder and fix the cap of the lamp. Tighten with the same adjustment as the posterior holder. **Important: The lamp must have space lengthwise 2 to 5 mm!** If there is not enough space shift the circlips.



- 8) Remove the protection film from the reflector and check if the shutter works properly.

3 Option for refitting kit for higher power

- 9) Substitute partial load choke (label: 210 mH) for new choke. Circuits points A and 2 or for lower voltages (ca. 380V) circuit points A and 1.
- 10) Substitute existing ignition for new ignition ZRM 12 ES 400.