

## UV Reflector Units

### *With and without shutters*

*For curing of :*

*UV inks*

*UV varnishes*

*UV adhesives*

*UV coatings*

*Suitable for system builders and retrofit*

**Köln**



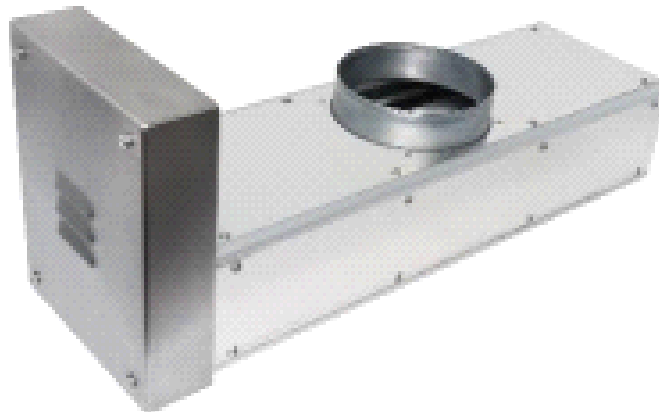
**Double-Aachen**



**Koblenz**


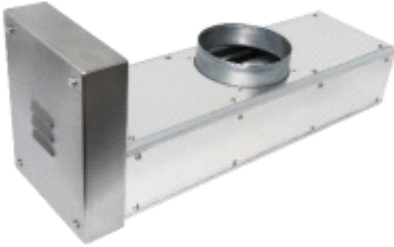





**Ellwangen**



**Twist**



UV Reflector Units (with shutters)	Koblenz	Ellwangen	Twist
			
Arc Lengths	100 - 600mm	100mm - 1450mm	350 - 1700mm
Specific Lamp Power	max. 240 W/cm (dependent on arc length)		
Dimensions	width: 176 mm, height: 108 mm (with air connection: approx. 160 mm)	width: 184 mm, height: 108 mm (with air connection: approx. 160 mm)	width: 238 mm, height: 166 mm (with plug: 312 mm)
Reflector Type	Parabolic		
Cooling	Air Cooled		
Mounting	horizontal, sideways or downwards	horizontal, sideways or downwards	for horizontal operation, shining downwards
Exhaust Air Connection	DN 100 or 125 or 140; number and diameter of air connections depending on arc length and specific power		
Shutter Control	built-in 5/2-way valve DC 24V		
Electrical Connection Output Signals	<ul style="list-style-type: none"> <li>• shutter open/closed</li> <li>• temperature switch (AC 250V, 6A; DC 30V, 5A)</li> <li>• PT100 temperature sensor (exhaust air)</li> </ul>		
Shutter Actuator	snap shutter, pneumatic 6...8 bar compressed air acc. to ISO 8573-1:2010		
Ambient Temperature	5 - 35 °C		
Protection Class	IP20		
Optional Extras	<ul style="list-style-type: none"> <li>• HiPro high voltage connector (bulk head mounting)</li> <li>• quartz glass holder/frame</li> <li>• mounted UV inline sensor (QWO)</li> <li>• elliptic (focussed) reflectors with exchangeable reflector sheets</li> <li>• air temperature control set</li> <li>• exhaust air temperature sensor PT 100</li> </ul>		
Notes	In principle the “Koblenz” is the same as the “Ellwangen” but it has a smaller actuator box, hence it is better suited to smaller arc lengths	Contains rotating shutter	

UV Reflector Units (without shutters)	Köln	Double-Aachen
		
Arc Lengths	100 - 2400mm	250 - 830mm
Specific Lamp Power	max. 240 W/cm (dependent on arc length)	
Dimensions	Dimensions width: 176 mm, height: 92 mm (with air connection: approx. 136 mm)	* See product datasheet for individual models
Reflector Type	Parabolic	
Cooling	Air Cooled	
Mounting	horizontal, sideways or downwards	horizontal (for all lamp types) or vertical (Hg only)
Exhaust Air Connection	DN 100 or 125 or 140; number and diameter of air connections depending on arc length	
Electrical Connection Output Signals	<ul style="list-style-type: none"> <li>• temperature switch (AC 250V, 6A; DC 30V, 5A)</li> <li>• PT100 temperature sensor (exhaust air)</li> </ul>	
Ambient Temperature	5 - 35 °C	
Protection Class	IP20	
Optional Extras	<ul style="list-style-type: none"> <li>• HiPro high voltage connector (bulk head mounting)</li> <li>• quartz glass holder/frame</li> <li>• mounted UV inline sensor (QWO)</li> <li>• elliptic (focussed) reflectors with exchangeable reflector sheets</li> <li>• air temperature control set</li> <li>• exhaust air temperature sensor PT 100</li> </ul>	
Notes	Aachen model contained two gill plates at either side, the additional side containing space for an igniter (still available on request)	The double Aachen is a special unit designed for fibre optic curing

**Please see our Hönle curing system for more UV reflector options including water cooled systems, LED systems and complete curing systems provided with cabinets**