



**LED Overview**

**Hönle LED-UV units**

High-performance units for the curing of inks, varnishes, adhesives and sealants & LED lighting systems for the automotive industry

**World's largest LED-UV portfolio**

- |                    |                             |
|--------------------|-----------------------------|
| LED Pen 2.0        | UVAHAND LED                 |
| LED Power Pen 2.0  | LEDLINE 500                 |
| Bluepoint LED eco  | LED Powerline AC/IC         |
| LED Spot W         | LED Powerline LC            |
| LED Spot 40 IC     | LED Powerline Focus         |
| LED Spot 100 HP IC | LED Powerline Flexo AC & LC |
| LED Cube 100 IC    | jetCURE LED                 |



**LED Pen 2.0**

subject to change without notice

The LED Pen is a handy LED technology based point source. Due to its compact size and low weight the LED Pen can be used in areas which are difficult to access.

The LED Pen is powered via an external plug-in supply unit (adaptable for the world wide use) which is included in the scope of delivery.

**Available wavelengths in nm: 365**  
**Irradiation intensity in mW/cm<sup>2</sup>: up to 4.800**



**LED Power Pen 2.0**

The LED Power Pen is a handy LED technology based point source. Due to its compact size and low weight the LED Power Pen can be used in areas which are difficult to access.

The LED Power Pen is powered via an external plug-in supply unit (adaptable for the world wide use) which is included in the scope of delivery.

**Available wavelengths in nm: 365/405**  
**Irradiation intensity in mW/cm<sup>2</sup>: up to 10.000 / 16.000**



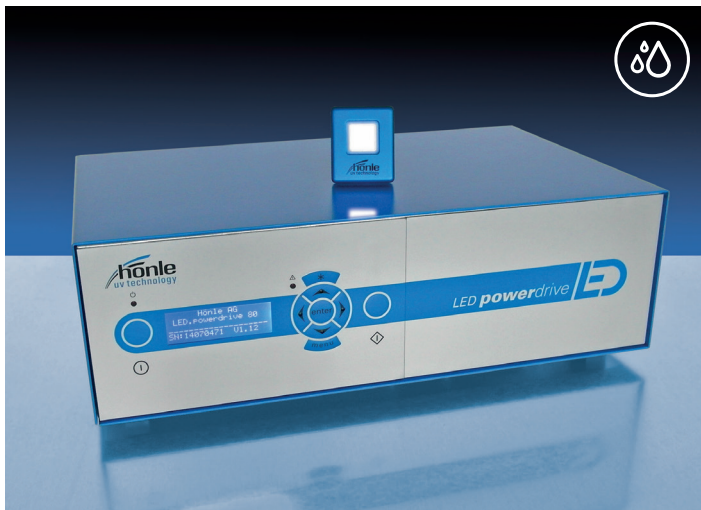
**bluepoint LED eco**

The bluepoint LED eco has been developed for all applications requiring a most intensive punctual UV irradiation.

Up to four LED heads can be connected to the operating unit. Each LED can be activated separately. bluepoint recognizes the type of LED autonomously and adapts the parameters automatically.

**Available wavelengths in nm: 365/385/405**  
**Irradiation intensity in mW/cm<sup>2</sup>: up to 20.000**



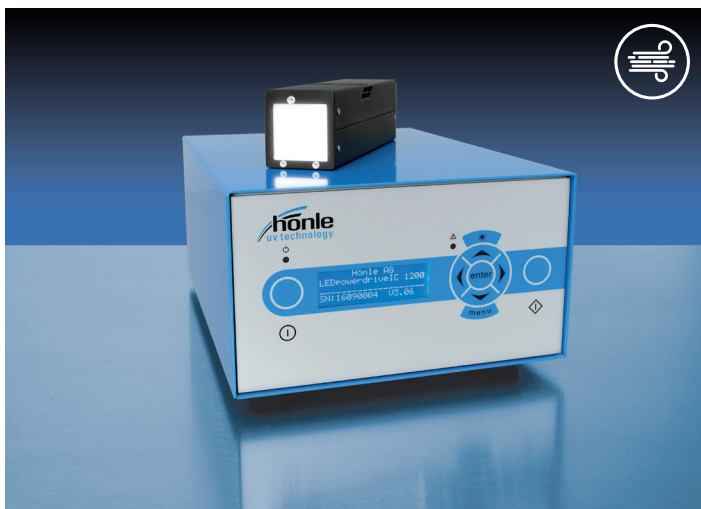


### LED Spot W & LED powerdrive

The LED Spot W provides a most intensive UV irradiation on a larger area, while having only very small space requirements.

Thanks to the external water cooling the extremely small lamp head design offers highest intensity. As the LED Spot does not require an integrated fan, it can also be used in a clean room environment.

**Available wavelengths in nm: 365/385/395/405/460**  
**Irradiation intensity in mW/cm<sup>2</sup>: up to 30.000**

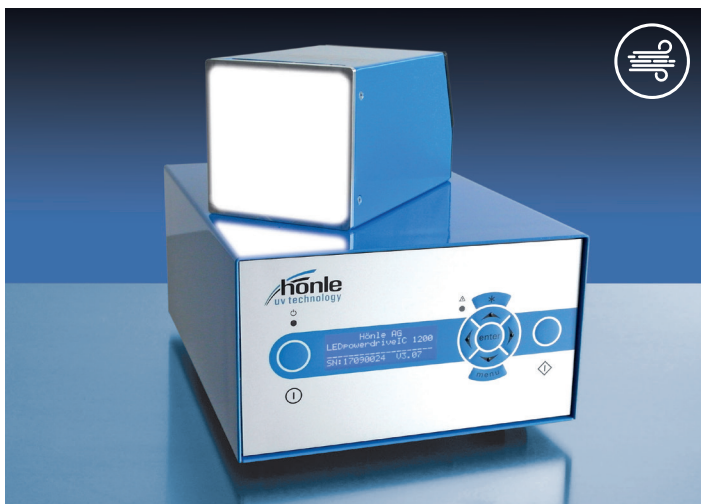


### LED Spot 40 IC & LED powerdrive IC

The LED Spot 40 IC was developed for all applications requiring a compact flood unit with high intensities.

The square light-emitting aperture has a size of about 40 mm x 40 mm at a base of only 55 mm x 50 mm. This compact design allows the integration of this small-sized LED flood unit in even the smallest spaces.

**Available wavelengths in nm: 365/385/395/405/460**  
**Irradiation intensity in mW/cm<sup>2</sup>: up to 10.000**

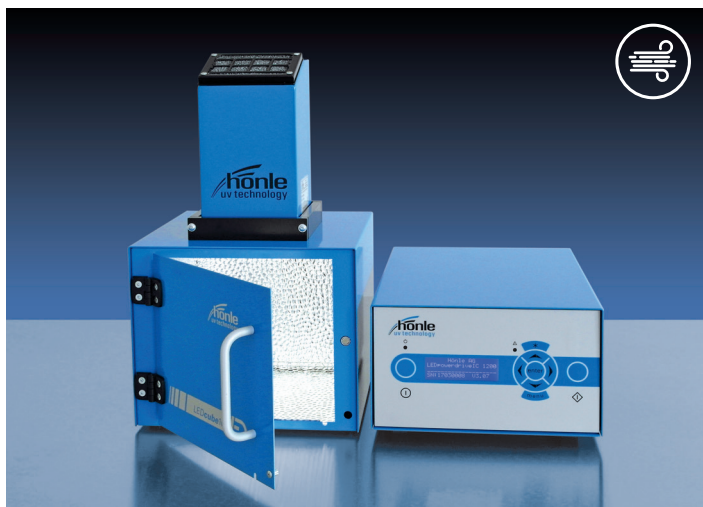


### LED Spot 100 HP IC

Due to a singular LED assembly and electronic power control the LED Spot 100 guarantees a high intensity as well as a homogenous distribution of light on larger areas.

The square light emitting apertures has a size of about 100 x 100 mm, which can be considerably increased by changing the distance to the substrate. Additionally, it is possible to connect several LED Spots 100 without gaps – and thus irradiate areas of any size required.

**Available wavelengths in nm: 365/385/395/405/460**  
**Irradiation intensity in mW/cm<sup>2</sup>: up to 3.000**



## LED Cube 100 IC

The LED Cube 100 IC is a compact UV irradiation chamber for use in the laboratory or for manual production. By employing different LED units the emission range and the intensities are adjustable to various fields of application.

The LED assembly as well as an electronic power control guarantee high intensity and homogenous distribution of light.

**Available wavelengths in nm: 365/385/395/405/460**  
**Irradiation intensity in mW/cm<sup>2</sup>: up to 3.000**

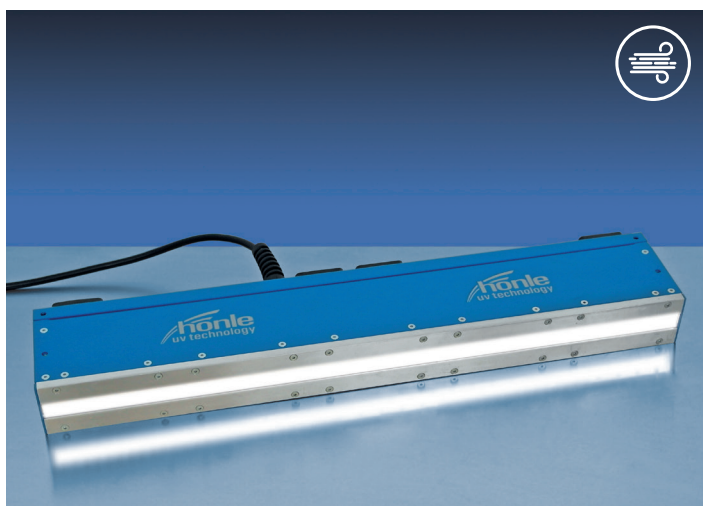


## UVAHAND LED

UVAHAND LED is a high-intensity hand-held UV lamp. It is easy to transport, ergonomically designed and ideal for mobile use.

Its intensive irradiation ensures reliable production results within seconds. A homogeneous intensity distribution is guaranteed by the arrangement of the LEDs.

**Available wavelengths in nm: 365/405**  
**Irradiation intensity in mW/cm<sup>2</sup>: up to 350**



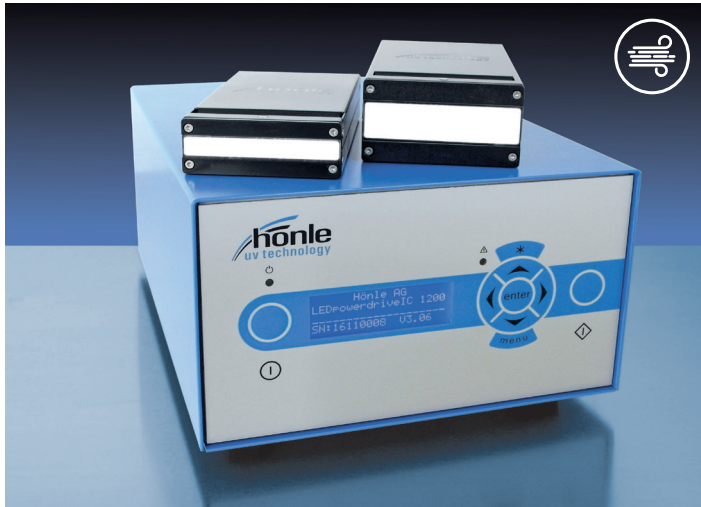
## LEDLINE 500

LEDLINE 500 is a highly intensive LED-UV line. Its compact design makes it easy to transport and thus ideal for mobile use.

Its intensive irradiation ensures reliable production results within seconds. An integrated timer allows the adjustment of irradiation times between 1 second and 19 hours which leads to exactly reproducible curing results. Of course continuous operation is also possible.

**Available wavelengths in nm: 365/405**  
**Irradiation intensity in mW/cm<sup>2</sup>: up to 300**





### LED Powerline AC/IC 410 and AC/IC 820

LED Powerline AC/IC is an air cooled high-performance LED-UV array for intermediate curing (pinning) and final curing for printing applications as well as curing of varnishes or UV-reactive adhesives and pottings.

Integrated air-cooling guarantees a reliable continuous operation over the whole ambient temperature area, without depending on huge external heat exchangers.

**Available wavelengths in nm: 365/385/395/405**  
**Irradiation intensity in mW/cm<sup>2</sup>: up to 16.000**

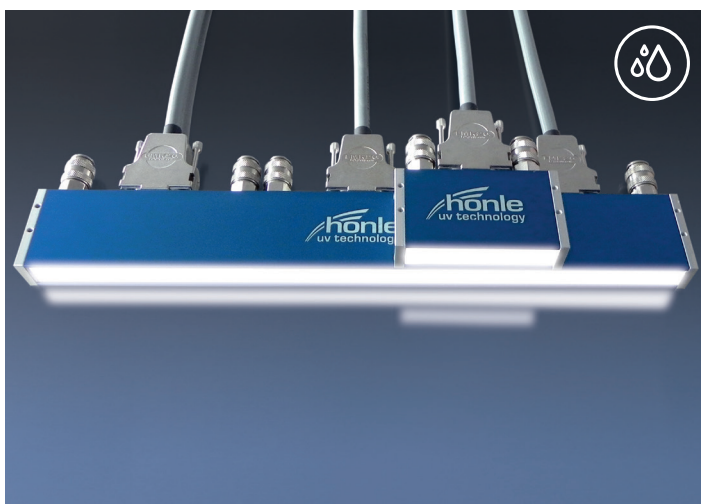


### LED Powerline AC/IC 410 Focus

LED Powerline AC/IC 410 Focus is applied for pinning and – at its power peak – for final curing inks and varnishes. By focusing the irradiation with a rod lense the distance between LED unit and substrate can be increased without a significant loss of intensity (max. up to the power peak). Focusing the UV irradiation reduces light straying to a minimum.

A compact design allows an integration even into narrow interspaces.

**Available wavelengths in nm: 365/385/395/405**  
**Irradiation intensity in mW/cm<sup>2</sup>: up to 4.000**

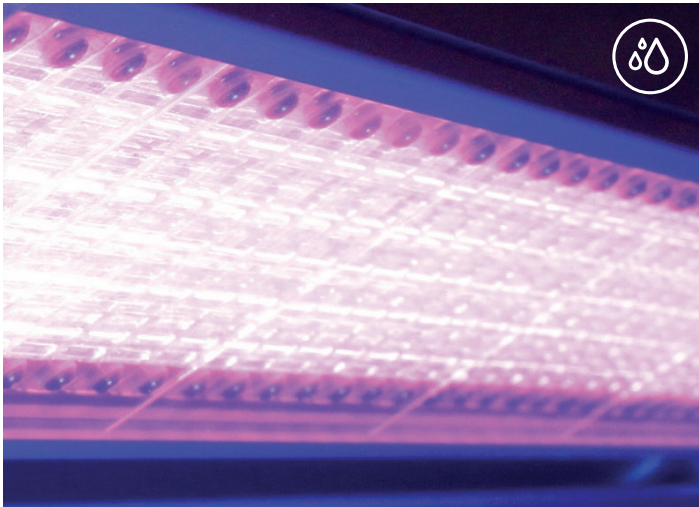


### LED Powerline LC

The LED Powerline LC is a high-performance array for inter-mediate curing (pinning) and final curing for printing applications. Other applications are the curing of varnishes or UV reactive adhesives and pottings.

With its low weight and small dimension the LED Powerline can be integrated in the smallest interspaces. The water-cooled unit is appropriate for being used in a clean room.

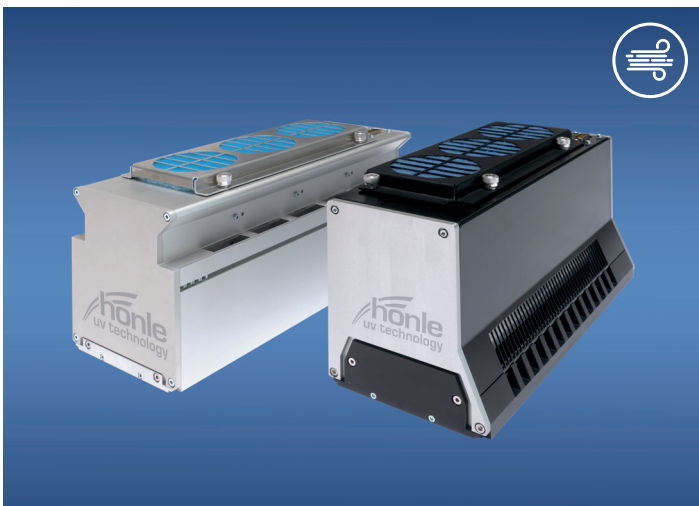
**Available wavelengths in nm: 365/385/395/405**  
**Irradiation intensity in mW/cm<sup>2</sup>: up to 25.000**



### LED Powerline Focus

Based on our experience from thousands of LED-UV installations for various applications we have now developed a new powerful LED-UV system designed especially for the installation in sheet-fed offset printing presses. The system is adapted to the special press requirements such as higher installation distances to the printed sheets. The special focusing optics provides high intensities and leads to excellent curing results even at high printing speeds.

**Available wavelengths in nm: 365/385/395**



### jetCURE LED S / jetCURE LED T

The **jetCURE LED** is a high-performance array for intermediate curing (pinning) and final curing in printing applications. Other applications are the curing of inks, varnishes, adhesives and pottings.

The array allows modular (grid 41 mm) and continuously variable control.

**S-version:** one-sided air outlet

**T-version:** double-sided air outlet on top

**Available wavelengths in nm: 365/385/395/405**

**Irradiation intensity in mW/cm<sup>2</sup>: up to 20.000**



### LED Powerline Flexo LC

The LED Powerline Flexo LC is a LED-UV curing system for curing highly reactive inks, which was especially developed for flexo printing applications, but is also used for curing varnishes or UV reactive adhesives and pottings.

Its length depends on the respective applications. The irradiation width answers all established demands of flexo printing. The LED powerline Flexo LC has an integrated control.

**Available wavelengths in nm: 365/385/395/405**

**Irradiation intensity in mW/cm<sup>2</sup>: up to 25.000**



### LED Powerline Flexo AC

The air-cooled LED Powerline Flexo is a high-performance LED-UV array for intermediate curing (pinning) and final curing for printing applications. Other application fields are the curing of varnishes or UV reactive adhesives and pottings.

**Available wavelengths in nm: 365/385/405**

**Irradiation intensity in mW/cm<sup>2</sup>: up to 25.000**



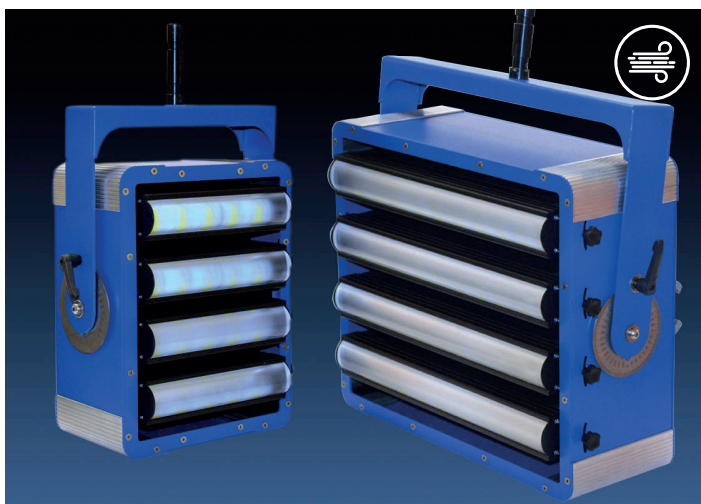
### LED On Board Lighting

This new LED lighting system was developed as on board lighting for crash tests. The lamps are positioned inside the car during the crash test to illuminate details.

The lamps are of small size, low weight and have a high light output and high stability.

**Colour temperature: 5.000 Kelvin**

**Illumination intensity: max. 130.000 Lux (boost mode)**



### LED Floodlight

The new LED lighting system is developed for high speed photography applications e.g. crashtests.

Maximum four LED aluminium profiles with an integrated cooling system are mounted in a housing equipped with an air cooling system.

**Colour temperature: 5.000 Kelvin**

**Illumination intensity: max. 670.000 Lux (boost mode)**



## UV measuring technology and control unit

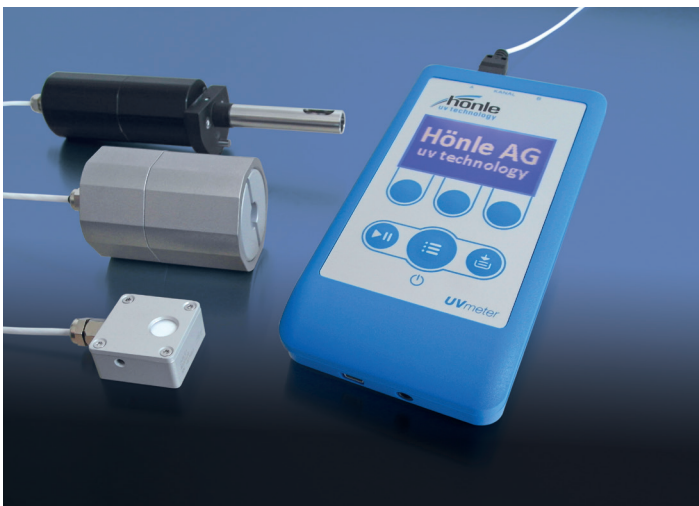


### OEM LED Controller

The LED Controller is a compact and efficient supply and control module for top hat rail mounting.

According to the application it is possible to combine several modules to supply bigger LED units. Comprehensive diagnostics, a compact and robust design as well as a flexible applicability characterize this deliberate OEM module.

Optional the control unit is available with a visualisation display which offers the operator an overview over the actual operating mode of each LED unit.

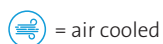


### UV/UV-LED Measuring

The hand-held Höhle UV-Meter measures exact data that is traceable to the German standard PTB (Physikalisch Technische Bundesanstalt). Different sensors cover wavelengths from 230 nm to 550 nm – UVC, UVB, UVA and VIS.

According to its wide range of interchangeable sensors UV-Meter is suitable for different manufacturing processes. Its compact surface sensors are only 14 mm high. Also for point sources various sensors are available.

We offer customized implementations to meet your demands. Most LED units can be delivered with 460 nm wavelength. The irradiation intensity was measured by a Höhle LED surface sensor.



= air cooled



= water cooled