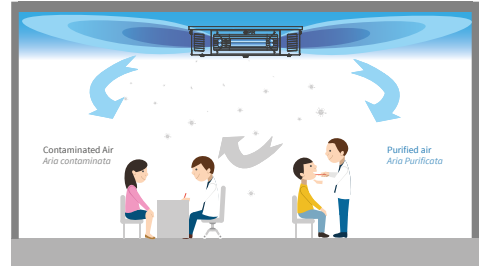
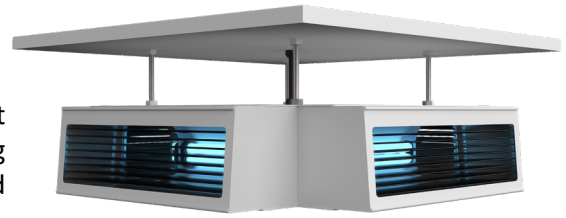


## UV-FLOW-4/...P-CL

The UV-FLOW .... CL is a controlled multidirectional flow device, with four powerful UV lamps inside and a narrow emission peak at wavelength of 253.7 nm. (nanometers), which has a strong germicidal effect against all micro-organisms (molds, bacteria and viruses). There is also a parabolic, mirror bright aluminum surface, which generates UV rays parallel beams by reflection. These beams pass through a special black laminated grid that directs UV rays to form a unidirectional flow ("blade UV").

When installed according to the instructions, this device can be used in the presence of people for intensive and continuous air disinfection. The UV-FLOW .... CL must be anchored to the ceiling to generate a special horizontal flow that will create a "zone of intense radiation" below the ceiling, which destroys all airborne microorganisms, due to natural convection of air.

The air, rich in microbes, is continuously treated and disinfected by the ultraviolet rays; a progressive decontamination of bacteria, viruses and molds is made, decreasing the possibility of bacterial, viral transmissions and contaminations in general. Continuous operation ensures a permanent progressive healthy environment, especially in hospitals, schools, restaurants, indoor workplaces as offices, laboratories, etc..An extremely important disinfection activity can be done in hospitals intensive cares units, to prevent the spread of diseases such as TB and other transmissible pathologies through air.



### KEY FEATURES

- Ceiling UV-C solution for air treatment in closed spaces
- Ozone-Free, 235.7 nm., UV-C Quartz Lamps
- To be used 24/7 also in presence of people
- One lamp on each side to maximise irradiation
- Safety switch to prevent accidental exposure to people



### TABLE

UV-FLOW	4/10P-CL	4/18P-CL
LAMP LIFETIME (hour)*	≤ 18.000	≤ 18.000
CONSUMPTION	40W	72W
DIMENSIONS LXSXH	595 x 595 x 258 mm (23.45 x 23.45 x 10.16 in)	595 x 595 x 258 mm (23.45 x 23.45 x 10.16 in)
PROTECTION RATING	IP 20	
WEIGHT	14 Kg (30.86 Lb)	15 Kg (33.07 Lb)
SURFACE AREA COVERED (> 10 µW/CM²)	36 ÷ 60 m² ( 387.5 ÷ 645.83 Ft²)	60 ÷ 80 m² (645.83 ÷ 861.11 Ft²)
AIR CHANGES PER HOUR	4 ÷ 6	4 ÷ 6
REPLACEMENT LAMP	n°4 GHP-10W	n°4 GHP-18W

\* continuous operation

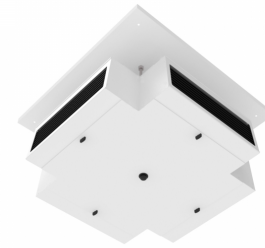
## Installation instructions

### General Design Guidelines

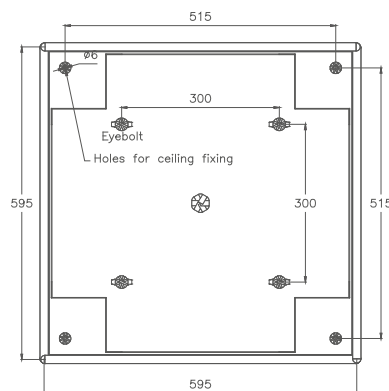
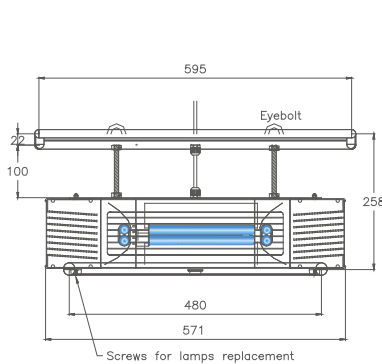
MINIMUM ROOM SIZE	UV-FLOW -4/10P-CL	UV-FLOW -4/18P-CL
MINIMUM CEILING HEIGHT	3 m (9.84 Ft)	3,70 m (12.14Ft)
MINIMUM LENGHT OF ROOM'S LONG SIDE	6,00 m (19.68 Ft)	8,00 m (26.24 Ft)
MINIMUM LENGHT OF ROOM'S (WHERE TO PLACE THE DEVICE)	6,00 m (19.68 Ft)	8,00 m (26.24 Ft)

### General Notes:

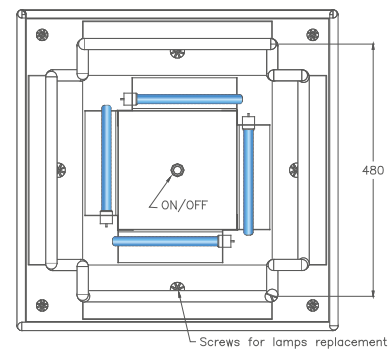
- Should be installed and maintained by a trained technician following installation instructions & user manual
- UV device should be distributed evenly so as not to create areas of high concentration and areas of low intensity of UV radiation. This will enable continuous disinfection of the ambient air circulating in the room due to natural convective motion.



### TECHNICAL DRAWINGS



TOP VIEW



BOTTOM VIEW